



Leyburn Primary School, Wensleydale Avenue, Leyburn, North Yorkshire, DL8 5SD

Head Teacher: Mrs. Sarah Beveridge



Special Educational Needs & Disabilities Co-ordinator (SENDCo): Mrs Corie Dales



Leyburn Primary School SEND Information Report (updated June 2025)

Introduction

Our Special Educational Needs & Disabilities (SEND) Information Report outlines the support and provision for Parents/carers of children and the children who have a SEND at Leyburn Primary School.

See also our Special Educational Needs and or Disability (SEND) Policy. <http://leyburn.n-yorks.sch.uk/wp-content/uploads/2022/10/policy-send.pdf>

The Local Authority has also published a Local Offer for Parents of children and young people, aged 0-25 years, with SEND, which outlines the provision available in Education and Health and Care within the North Yorkshire area. <https://www.northyorks.gov.uk/children-and-families/send-local-offer>

The areas of SEND that are provided for:

All children are welcomed into our school. We aim to offer an inclusive environment for all children at Leyburn Primary school, including those with SEND. We will make necessary reasonable adjustments to provision, where possible, to ensure that all children are represented equally in all that we do in our school. For example, outdoor pursuits, sporting events, educational visits, school performances, collective worship.

Who are the best people to talk to at our school about my child's difficulties with learning /SEN or Disabilities?



Class Teacher (CT), responsible for:

- High Quality teaching of all children, including those with SEND to ensure access to an inclusive curriculum.
- Checking on the progress of your child; identifying, planning and delivering any additional or different support they may need; involving the SENDCO as necessary.
- Meeting the parents each term to share, review and plan the next steps in learning. Recording this, on an Individual Support Plan (ISP).
- Ensuring that all staff working with your child are helped to deliver the planned provision, so your child can achieve the best possible progress. This may involve Teaching Assistants (TA) outside specialists or agencies and other professionals.
- Ensuring they follow the school's SEND Policy in their class and for all children with SEND.

The Special Educational Needs & Disabilities Co-ordinator (SENDCO) is Mrs. Corie Dales, she holds the National qualification for Special Educational Needs, also holds Approved Teacher Status for SpLD Dyslexia. She is responsible for:



- Co-ordinating all of the support for children with SEND and developing the schools SEND Policy to ensure all children access a consistent, high quality response to meeting their specific needs.
- Ensuring that you, as parents, are: involved in supporting your child's learning; kept informed about the support your child is receiving and reviewing how they are doing.
- Engaging the right specialist support for the teachers. Liaising with outside specialists who may be offering help and support for your child's learning.
- Updating records for each individual child with SEND, in order to track progress and provision.
- Working with the SEND link Governor to ensure they are familiar with SEND provision across the school.

Headteacher (HT) The Head Teacher is Mrs. Sarah Beveridge, she is responsible for:



- The day to day management of all aspects of the school, this includes supporting children with SEND.
- The HT will delegate responsibility to the SENDCO and the CT but she is responsible for ensuring that your child's needs are met.
- The HT will ensure the training needs of the SENDCO and other staff are met.
- The HT will make sure that the Governing Body is kept up to date about issues relating to SEND.

SEND link Governor - The SEND Governor at Leyburn Primary School is Ms Phillipa Turner. She is responsible for ensuring that the necessary support is made for any child who attends the school with SEND.

All staff can be contacted via email leyburn@ycatschools.co.uk or by telephoning the school on 01969 623187

What support do we provide for your child and you as a parent of a pupil with SEND?



- The CT is regularly available to share your views, discuss your child's progress or any concerns you may have. You may also like to share achievements, information or changes that could be affecting your child at school or discuss what strategies may be working at home and at school. This sharing of information and strategies can be a positive step towards helping your child to receive the right support. At Leyburn Primary School we endeavour to establish positive relationships between home and school allowing us to build on your child's strengths and interests.
- Mrs. Dales (SENDSCO) and/or Mrs. Beveridge (HT) are always willing to meet with you to discuss your child's progress or any concerns you may have.
- Any additional or different provision your child is receiving, will be recorded on an Individual Support Plan (ISP); this will be shared and reviewed with you each term.
- Homework can and will be adjusted as needed to support your child's individual learning.
- Any information from outside agencies and/or specialists will be discussed with you; where possible you will be able to speak directly to that professional or we will explain any reports as necessary.
- A home / school record may be used to support communication between home and school or an email contact or telephone conversations may be preferred options.
- We keep secure and confidential records of Individual Provision for all children on the SEND register, where appropriate, to record progress, share strategies and plan next steps.
- We ensure that all children including those with SEND are supported in improving emotional and social development. We offer Social Emotional and Mental Health Screening using screening programmes suitable for children of all ages across the school. These suggest ideas for support for both home and school. We offer additional pastoral support arrangements, when needed, through sessions with a trained member of staff and measures to prevent bullying.
- We have a clear policy to manage and promote positive behaviour and emotional regulation, using the restorative practice and emotion coaching approaches in our school to ensure that all children are supported.
- We have school leaders/pupils with responsibilities across the school who support peers, hold meetings and discussions to offer suggestions or highlight any problems.
- We monitor all children with SEND carefully to ensure they are making progress, often using a variety of intervention programmes.
- Parents, families and children will be involved at all stages of planning.

What are the different types of support available for children with SEND in our school?

High Quality teaching for all children:

- The CT has the highest possible expectations of your child and all pupils in the class.
- All teaching is built on what your child already knows, can do and can understand. Lessons are sequenced, progressive and differentiated to meet the needs of all children. The CT will teach different groups and share her time equally with the children, whatever their ability.
- Different ways of teaching are in place in order to promote engagement, involvement and participation in learning for every child to ensure that they are making the best possible progress. This involves a range of research-based approaches and strategies, including; explicit instruction, cognitive and meta-cognitive strategies, scaffolding, flexible grouping and the use of technology.
- The CT carefully tracks your child's progress and may identify that your child has 'gaps' in their learning and that they are in need of some additional support to help them make progress.
- All children are entitled to this as part of excellent classroom practice and high-quality teaching.

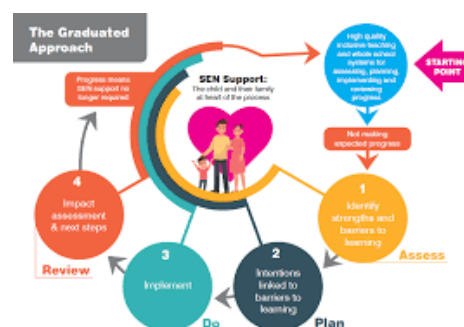
SEND support

It may be that your child has a specific barrier to their learning and this is affecting their progress. The CT would discuss any specific difficulties with the SENDCO, HT and parents to clearly identify the child's needs.

There are four main areas of need:

- Cognition & Learning
- Communication & Interaction (including Autism)
- Social, Emotional & Mental Health
- Sensory & Physical needs

<https://www.lancashire.gov.uk/media/922346/chapter-2-continuum-of-need-and-types-of-need.pdf>



At Leyburn Primary School we have access to a range of resources and strategies in school to support each area of need. We also use a range of assessments to help identify a child's needs. The Local Authority have developed a banding system, which identifies specific areas of need for the child, this helps us to introduce adequate provision to address those areas of need using bespoke support and intervention.

This can be a difficult time for any parent and you can access additional support and advice from the following:

- SENDIASS – Special Educational Needs and Disability Information Advice and Support Service
<http://www.sendiassnorthyorkshire.co.uk> - Telephone – 01609 536923



- Parent and Carer Voice North Yorkshire - <https://www.parentcarervoicenuk.org>



- Community First Yorkshire Parent Carer Voice (formerly NYPACT) – <https://www.communityfirstyorkshire.org.uk>



- North Yorkshire Pact: Parent and Carer forum – <https://www.autism.org.uk>



If your child has an 'EHC Plan' they will have regular meetings including an Annual Review; you will be asked to contribute your views and those of your child as this is a vital part of the Annual Review. All of the professionals involved with your child will be invited and most will try to attend. If they are unable to attend they will often provide a written report. The Annual Review is in addition to any other reviews you may attend throughout the year in order to monitor the planned provision for your child.

Who are the other people providing services to children with SEND in our school?

- Local Authority SEND HUB
- Educational Psychology Service
- Speech & Language Therapy
- Educational Social Worker
- Healthy Child team
- Occupational Therapy
- Physiotherapy
- Community Adolescent Mental Health Service (CAMHS)

How is extra support allocated to children?

- The school budget, includes some limited funding for supporting children with SEND.
- The HT decides on the budget for SEND in consultation with the Governing Body, on the basis of the needs in the school.
- The HT and SENDCO discuss the SEND in the school: the children already getting extra support; the children needing extra support and the children identified as not meeting the age-related expectations
- The HT and SENDCO plan what resources, training and support is needed, this is reviewed regularly and changes made according to needs and available funding.
- In exceptional circumstances and for children with significant high needs additional funding may be requested from the Local Authority.

How are the teachers in school helped to work with children with SEND?

- Part of the SENDCO's role is to offer advice and support to CTs in planning for children with SEND. The SENDCO holds the National Qualification for SENDCOs, attends regular training, Local Authority SEND network meetings and Multi-Academy Trust (MAT) SEND network

meetings to ensure that the school is up to date with any recent changes or statutory requirements.

- The school has a continuous professional development plan for all staff to improve the teaching and learning of children including those with SEND. This can include whole school training sessions with specialists as well as ongoing training, support and advice from the Head Teacher, SENDCo and Subject Leaders.
- Individual CTs and TAs attend training courses run by outside agencies, such as speech and language therapists and other services that are relevant to the specific needs of a child in their class. Or they are given ongoing advice and support from specialists working with a child in their class.



How is the school accessible to children with SEND?

We ensure that resources and equipment used is accessible to all children regardless of their needs. Extra- curricular activities, school outings and off-site visits are accessible to all children including those with SEND (any adaptations or reasonable adjustments are made, if required, to ensure that all children can access these. At Leyburn Primary School the main building is accessible to children with physical disabilities and the school is on one level with no stairs.

How will we support your child when they leave school or move into another class?

If your child is moving to another school:

- We will contact the receiving school's SENDCO and ensure they know about any special arrangements or support that need to be made for your child.
- We will ensure that all records about your child are passed on as early as possible. Some children will have an 'Overview of provision'; this gives a summary of the type of support given, the effectiveness of the strategies used, a child's strengths and needs; this may form part of the records and will aid transition.
- We may arrange a transition meeting/visits with parents, specialists and the receiving school if this is necessary

If your child is in Year 6:

- We will invite the SENDCO from the Secondary School to discuss specific needs of your child, a transition package will be put together for them.
- Your child will access focused learning about aspects of transition to support their understanding of the changes ahead.
- Where possible your child will visit their new school on several occasions (sometimes with a TA) and a member of staff from their new school will visit your child at our school.

If your child is moving classes in our school:

- All Information will be passed onto the new teacher in advance and discussed via a meeting to share the ISP, your child's needs, strategies and resources.
- Your child will visit their new classroom, their new teacher, support staff and will be given opportunities to take photos to enable them to discuss these at home and become familiar with any changes.

If your child is moving to us from another school:

- We will discuss your child's needs with their current school and any specialists involved

- We will arrange a meeting for parents, Specialists, SENDCo and the new CT (your child would also be welcome to attend) to discuss specific needs and arrange details of the move
- Visits will be arranged prior to the start date to ensure that your child has had the opportunity to meet classmates, Teachers, see their new classroom and have a tour of their new school
- They will be invited to stay for lunch in order to experience this at their new school (parents may also stay for lunch with their child if required)

What should I do if I have a complaint to make regarding SEND?

If the issue cannot be resolved by speaking initially to your child's Class Teacher, Mrs. Dales (SENDCo) or Mrs. Beveridge (Head Teacher). You should then contact the school and ask to see and follow the school's complaints procedure.

Here are some useful links to help to support you and your child at home:

<http://leyburn.n-yorks.sch.uk/children/learning-zone/>

<http://leyburn.n-yorks.sch.uk/wp-content/uploads/2021/08/Support-for-pupils-and-parents-in-primary-schools-in-relation-to-mental-and-emotional-wellbeing-NYES.pdf>

<http://leyburn.n-yorks.sch.uk/children/e-safety/>

<http://leyburn.n-yorks.sch.uk/parents/support-for-parents/>

Mrs. Corie Dales (SENDCo)

Reviewed February 2021

Reviewed February 2022

Reviewed October 2022

Reviewed April 2023

Next review April 2024

Reviewed September 2024

Reviewed June 2025